

SETTING UP THE APPLE TIME CAPSULE FOR OPTUSNET CABLE

THE PROBLEM

If you have an existing cable internet connection and wish to change to using the Time Capsule as a router for one or several computers ... it is unlikely that it will work first time.

Optusnet in Australia does not support "routing" - sharing one internet connection between several computers so there is no advice on the Optusnet website.

There seems to be very little user advice on the Internet.

MY EXPERIENCES

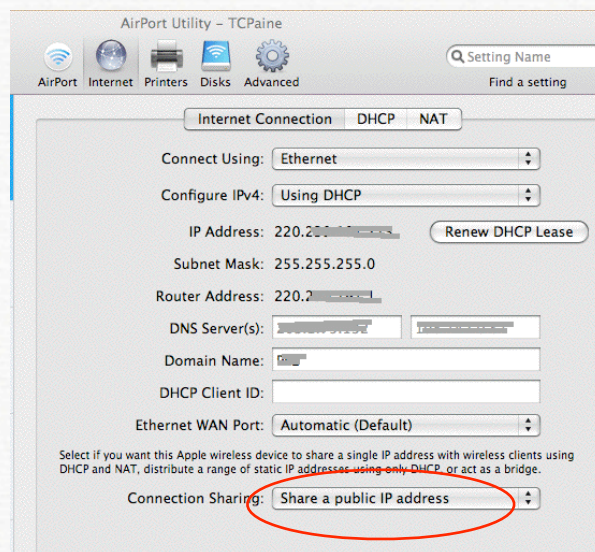
I initially set up my Time Capsule as a server but used a D-Link router to connect to the Internet. The Time Capsule was set in "Bridge" mode which means it can connect computers to the Internet via the D-Link.

I only retained the D-Link because it had a parallel printer port that kept my ancient laser printer going. Now that the printer has expired I have decided to drop the D-Link.

The Time Capsule would not connect to the Internet when I plugged the cable modem cable into the WAN port.

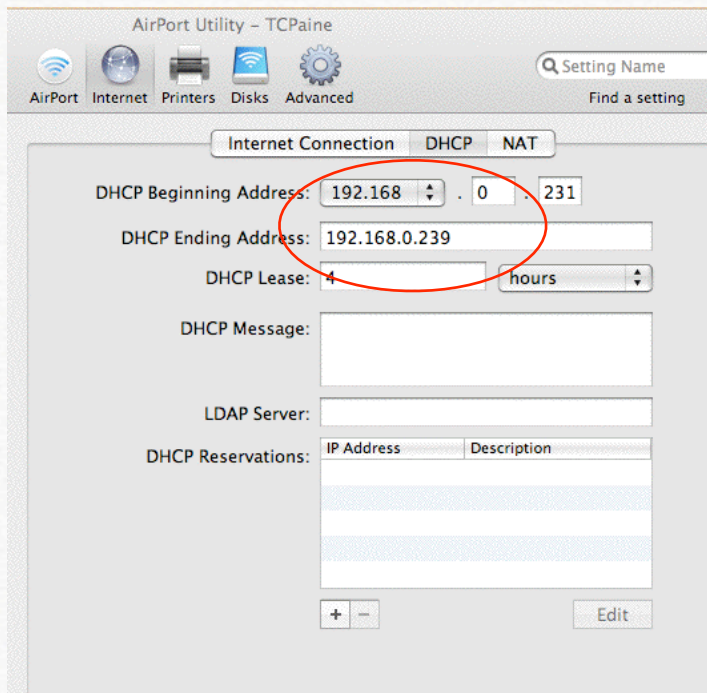
SOLUTIONS

I changed the Time Capsule from Bridge mode to "Share a public address" using Airport Utility (Manual Set-up / Internet / Internet Connection



TIME CAPSULE SET-UP

I clicked on the DHCP tab and made sure that the allocated Beginning and Ending addresses were valid (10.0.0.0 - 10.255.255.255, 172.16.0.0 - 172.31.255.255 or 192.168.0.0 - 192.168.255.255)



Now the important bit - the Cable modem needs to be reset so that it recognises that the router has changed. With my modem this is done by unplugging the power cord for several minutes (maybe up to half an hour). The stand-by button is no good for this as it does not reset the modem.

After this I could connect to the Internet via ethernet cable into the Time Capsule or view Airport wireless - phew!